

RAXML DNA

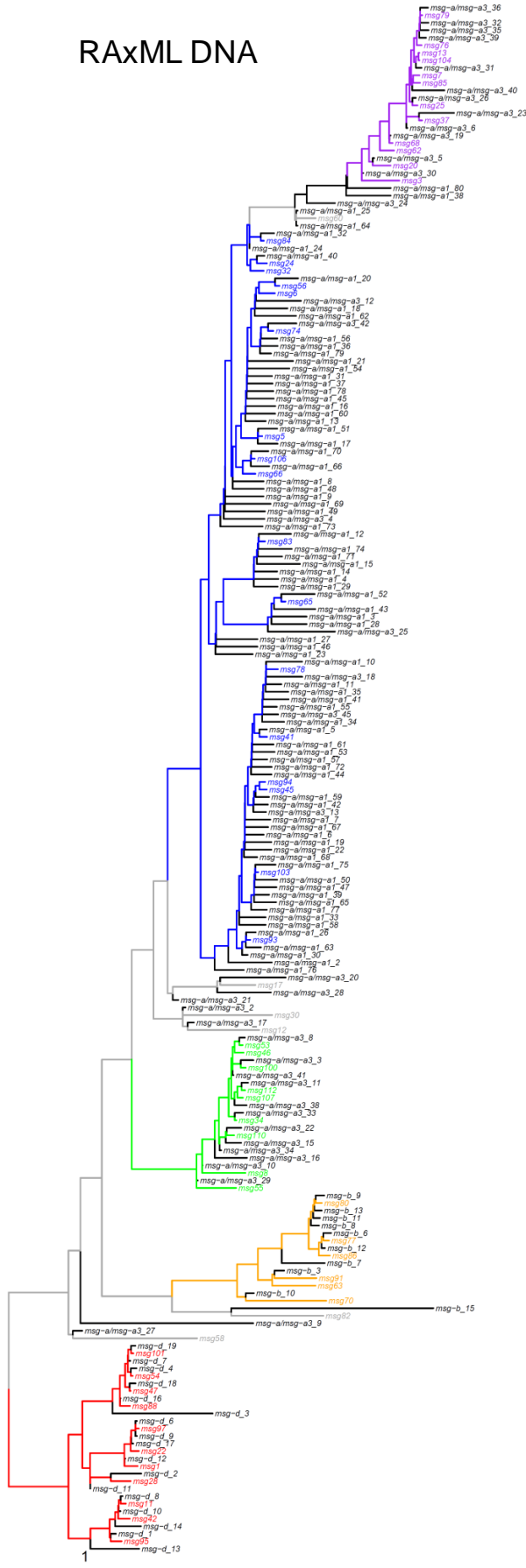


Figure S11

Maximum likelihood phylogenetic tree including *msg* genes reported by Ma et al (2016). Analysis of the 61 *P. jirovecii* *msg* genes plus the 146 *msg* genes of Ma *et al* (4) shown in black with an exon larger than 1.6kb. The 146 sequences have been added into the tree of Figure 1a using the evolutionary placement algorithm (EPA) from RAXML (no new bootstrap values). The *msg-C* gene of Ma *et al* (4)(*msg-C_1*) is located just underneath the *msg-I* family. Scale, mean substitution / site.