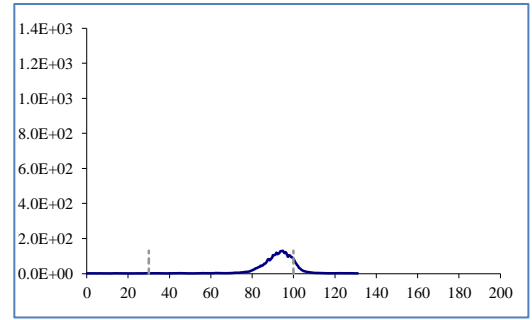
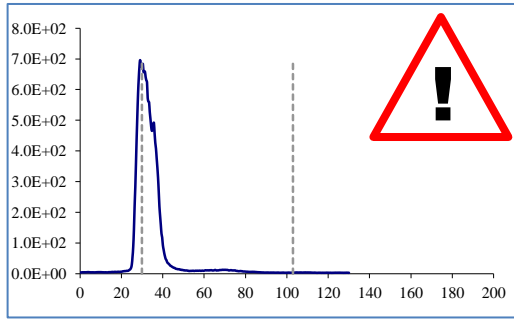


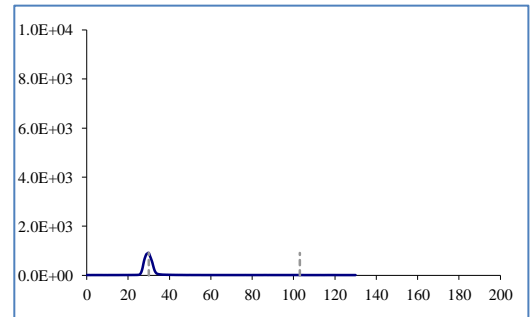
Bridatec

TcO₄

Hahnemühle 2040B
MEK
5 min/7 cm
Drop (≤ 5 µl): not dry
Rf Bridatec: 0
Rf TcO₄: 0.9 – 1.0
Rf TcO₂: 0



TcO₂



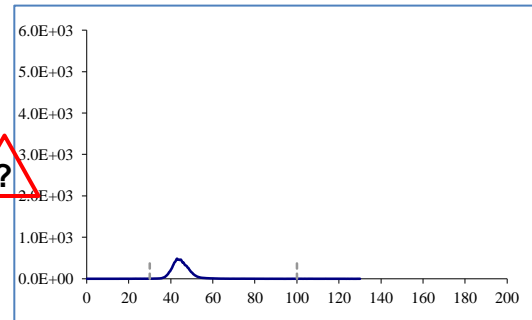
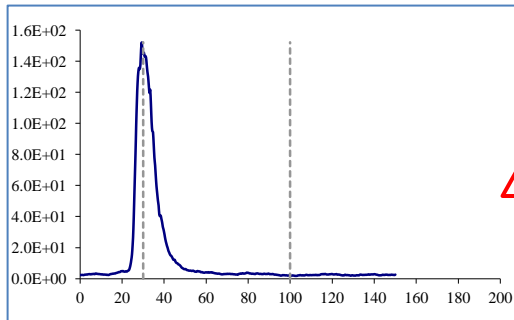
Reference: joelle.caputo@chuv.ch / marietta.straub@chuv.ch

CHUV University Hospital CH-1011 Lausanne

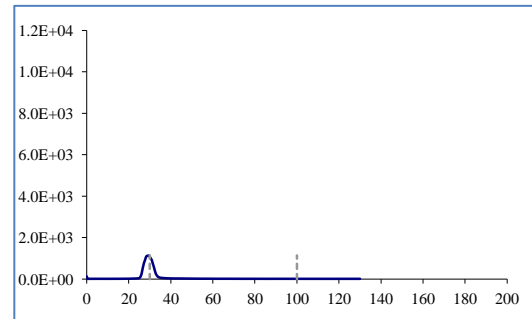
Bridatec

TcO₄

Hahnemuehle 2040B
NaCl saturé
37 min/7 cm
Drop (≤ 5 µl): not dry
Rf Bridatec: 0
Rf TcO₄: 0.1 – 0.2
Rf TcO₂: 0



TcO₂

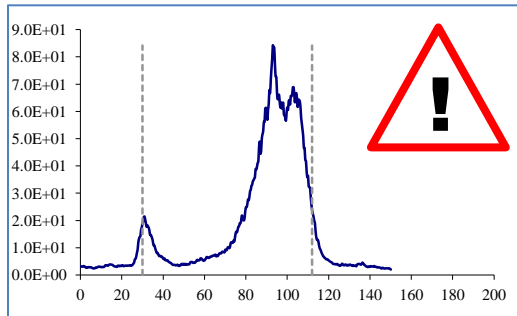


Reference: joelle.caputo@chuv.ch / marietta.straub@chuv.ch

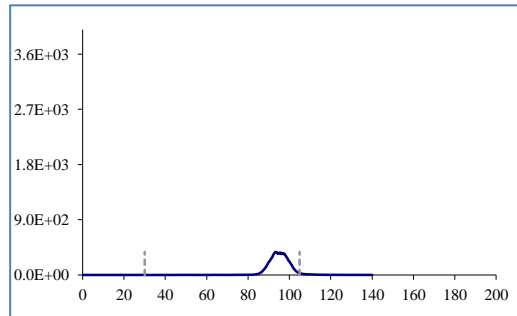
CHUV University Hospital CH-1011 Lausanne

Bridatec

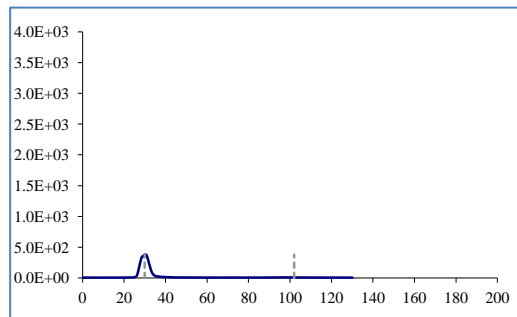
Hahnemuehle 2040B
ACN / H₂O
3 : 1
6 min/7 cm
Drop ($\leq 5 \mu\text{l}$): not dry
Rf Bridatec: 0.7 – 0.8
Rf TcO₄: 0.8 – 0.9
Rf TcO₂: 0



TcO₄



TcO₂



Reference: joelle.caputo@chuv.ch / marietta.straub@chuv.ch

CHUV University Hospital CH-1011 Lausanne