

A CHRONIC
ILLNESS LIKE
ANY OTHER ?

HIV ————— STIGMA ————— DISCRIMINATION

THE IMPERATIVE TO TACKLE STIGMA AND DISCRIMINATION TO END AIDS BY 2030

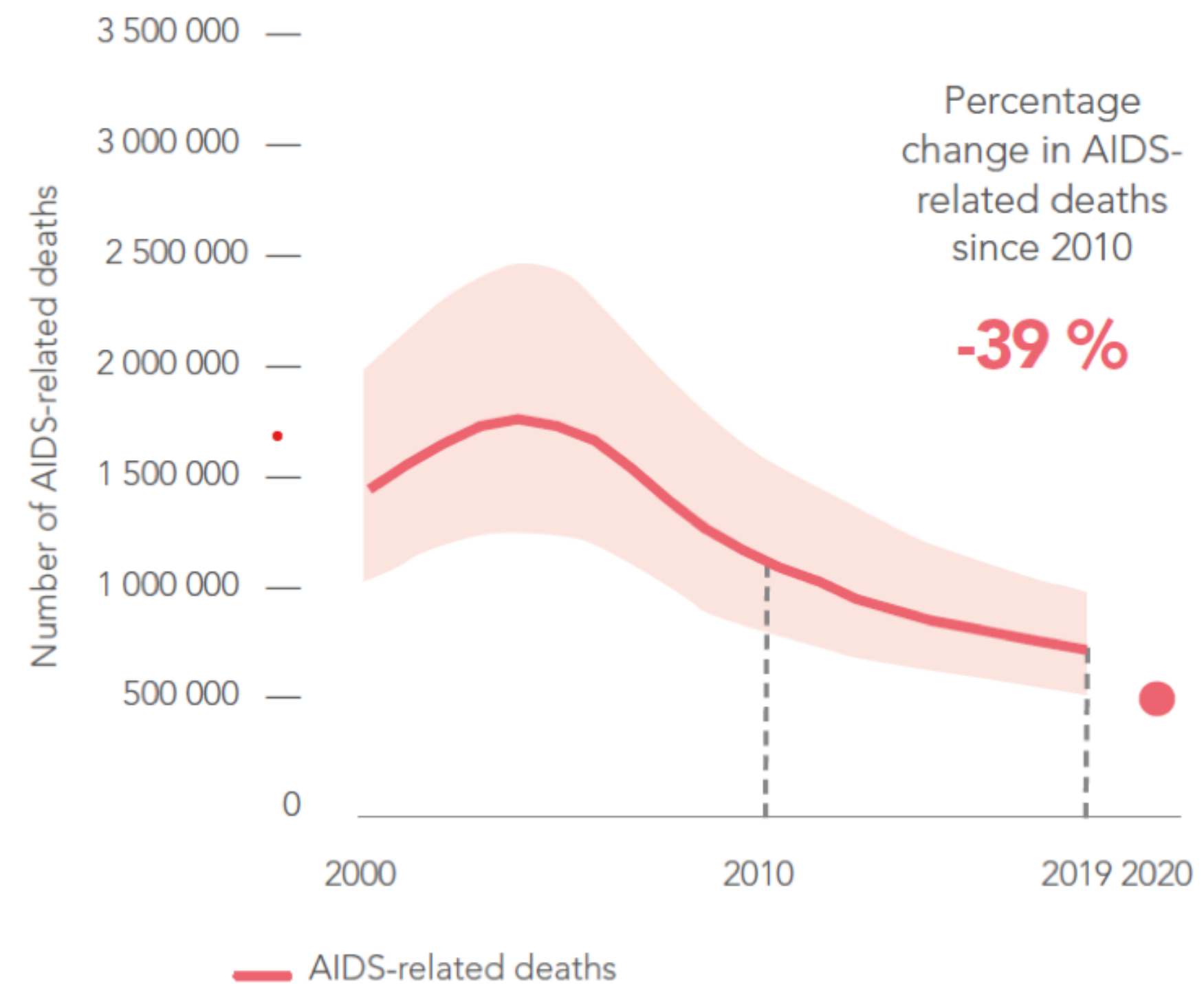
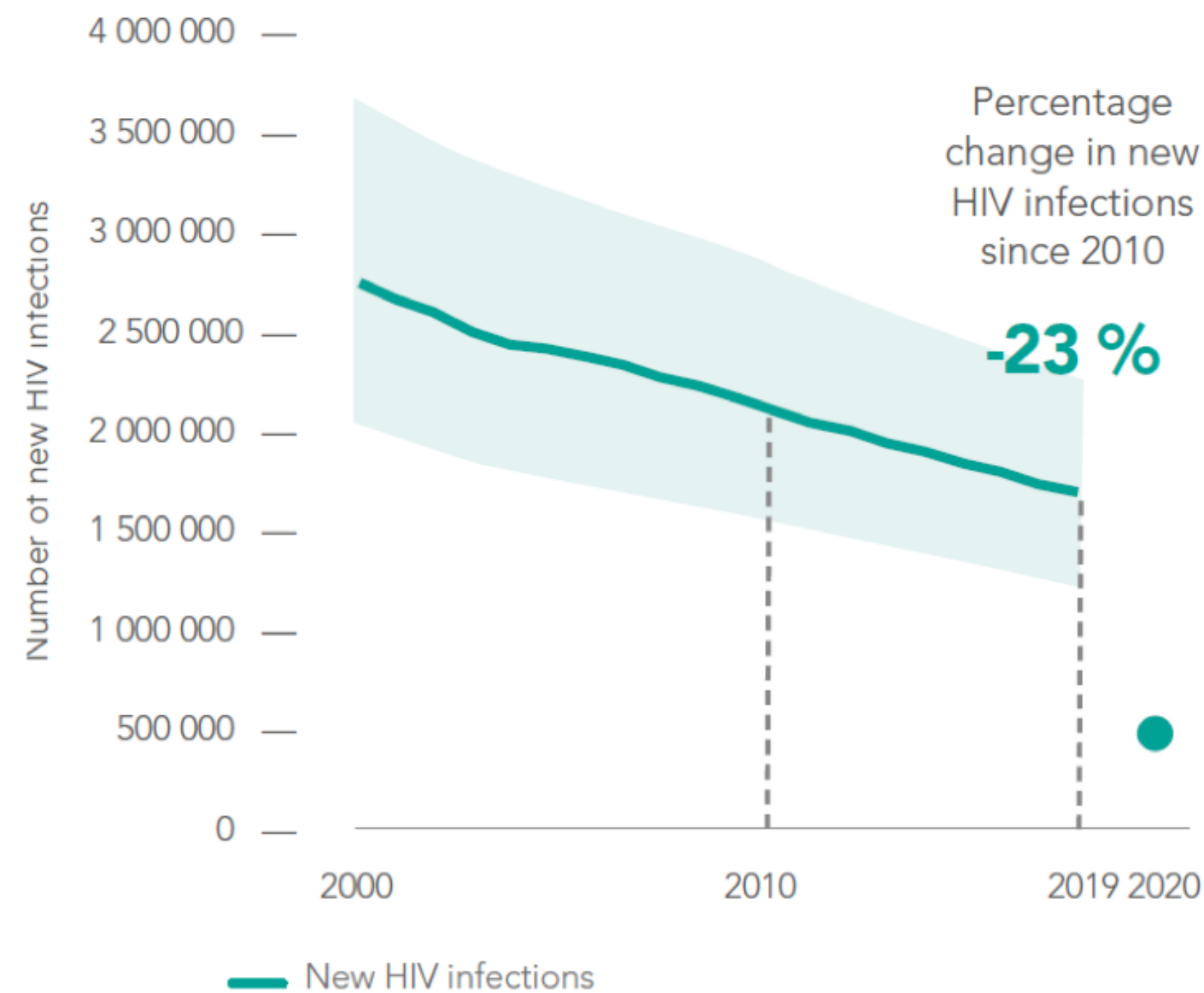
Luisa Cabal

Director ad interim, Department of Gender,
Human Rights and Community Engagement, UNAIDS

GREAT SUCCESSSES IN THE HIV RESPONSE

but progress is extremely uneven

Number of new HIV infections and AIDS-related deaths, global, 1990–2019



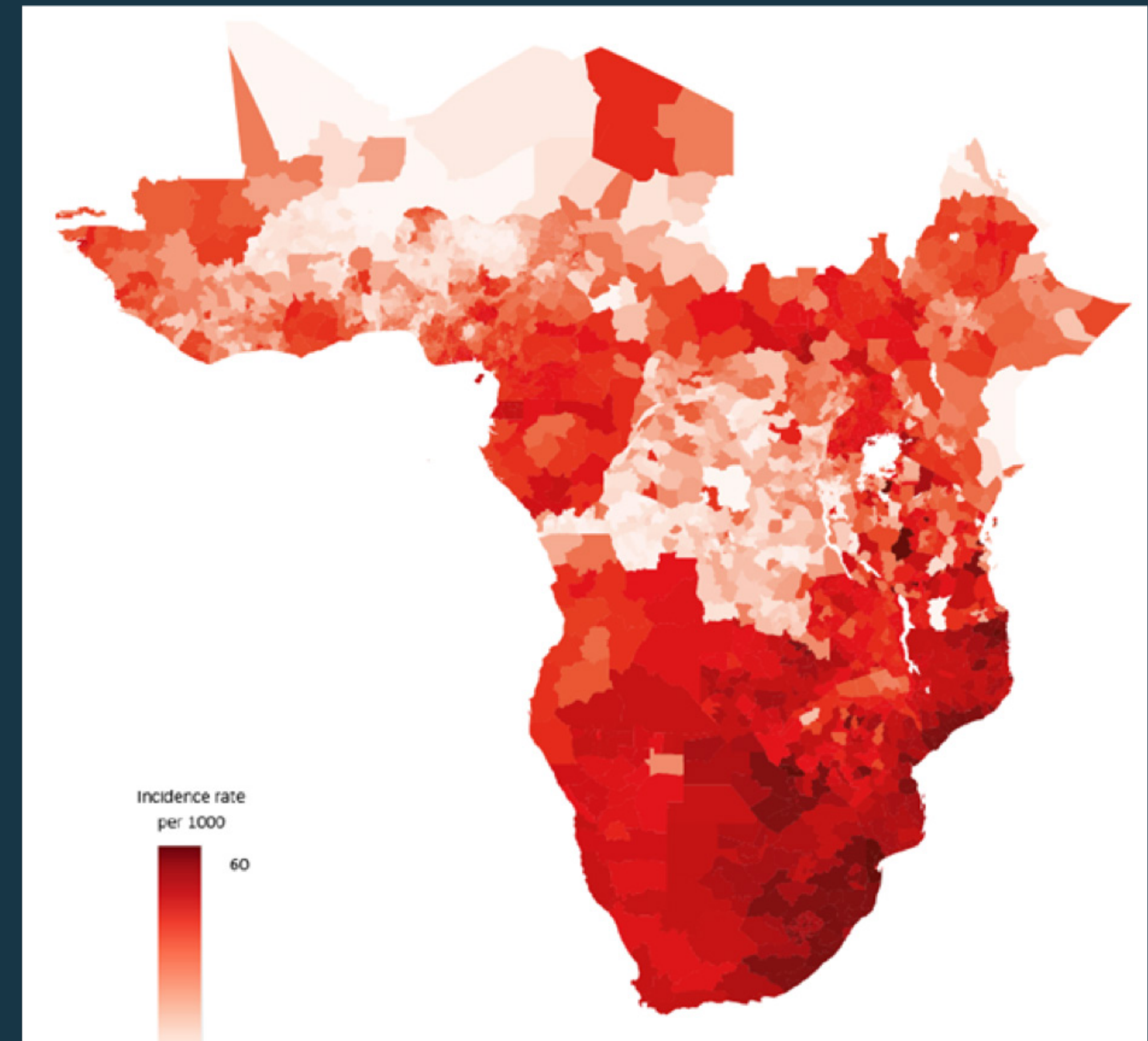
THE IMPACT OF GENDER INEQUALITY AND DISCRIMINATION

Women and girls in sub-Saharan Africa critically affected

HIV incidence among adolescent girls and young women (aged 15–24 years), 2019

59% of all new infections

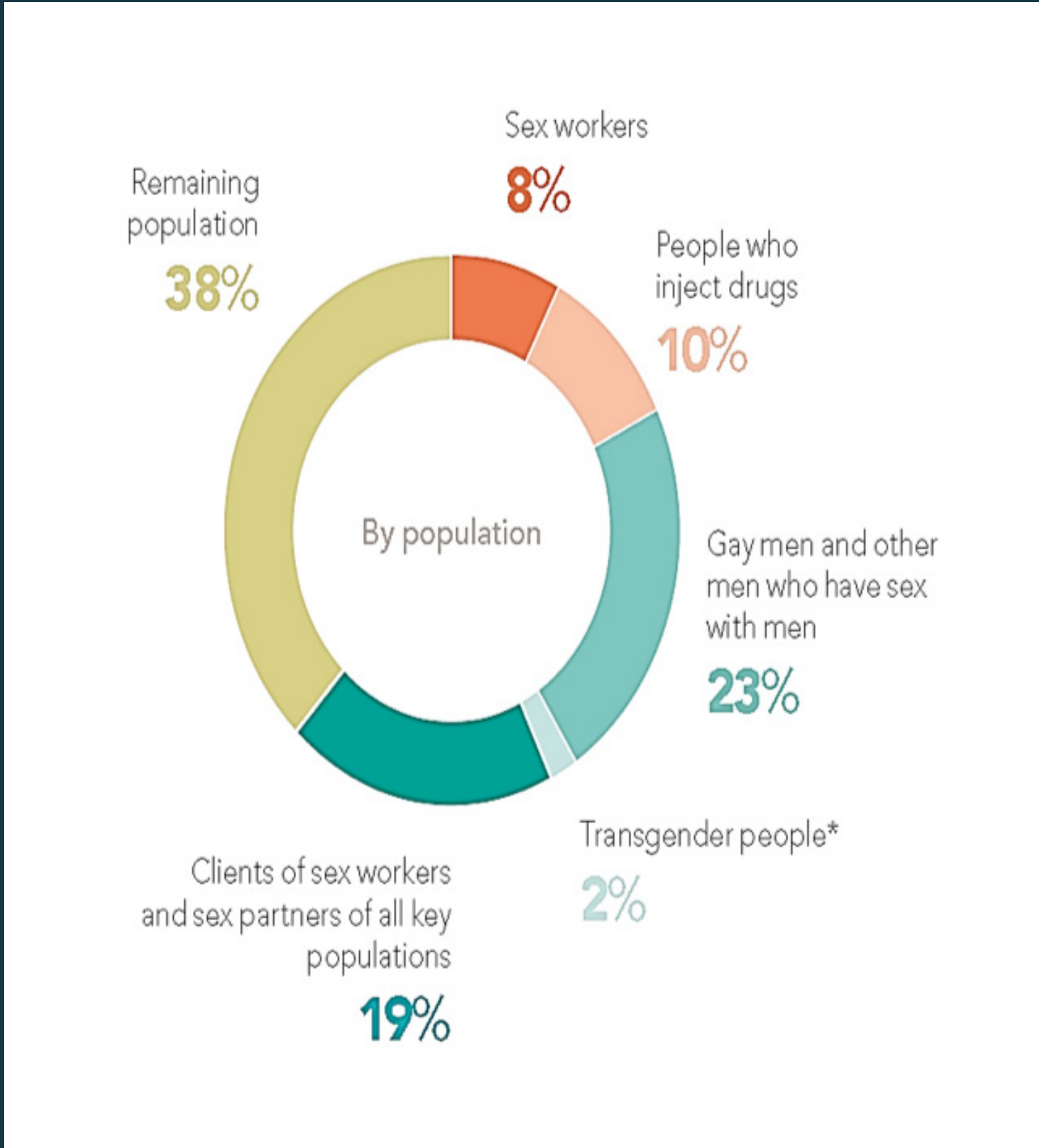
Young women: 24% of new infections in 2019, despite making up 10% of the population



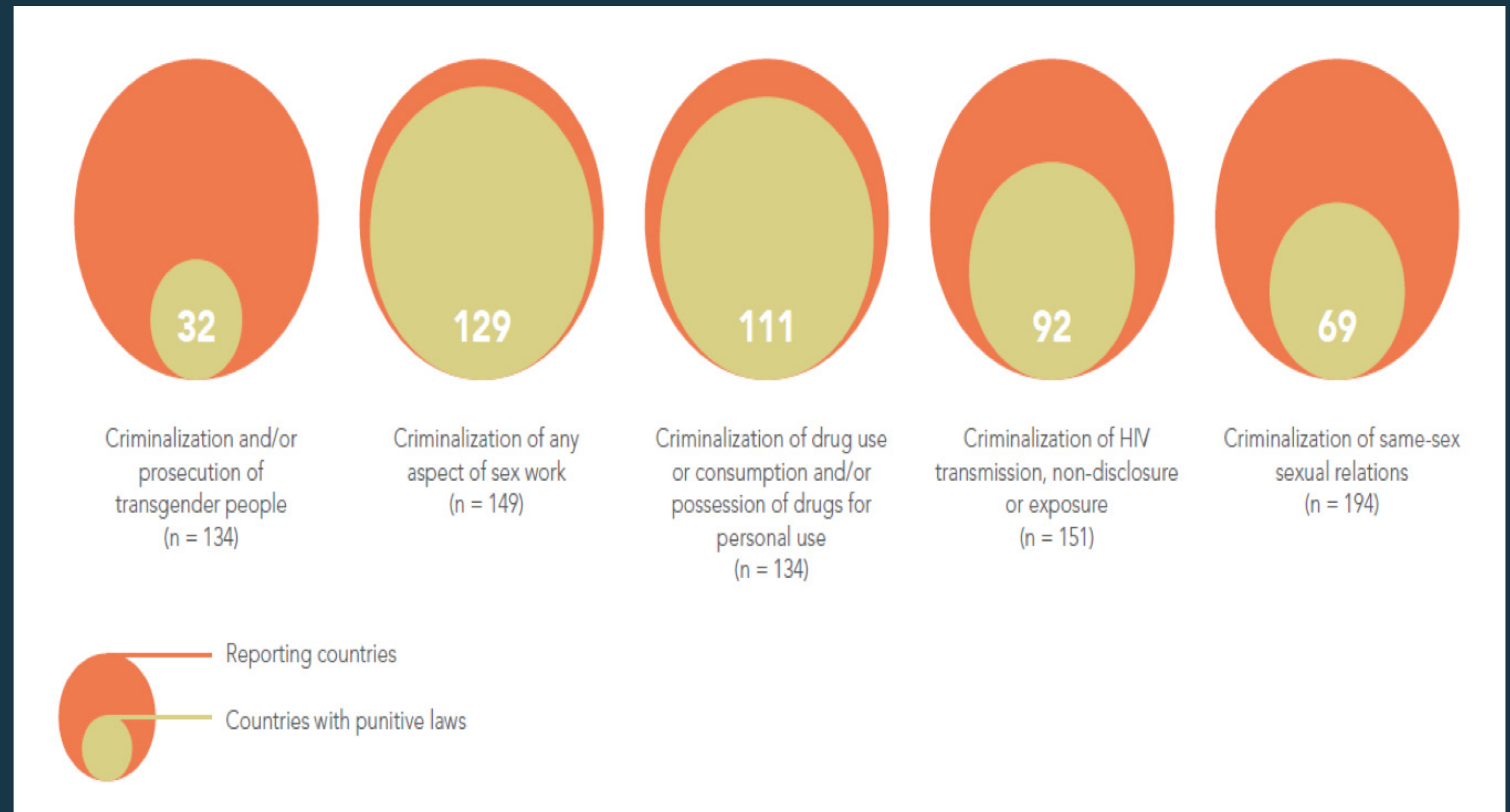
62% OF NEW INFECTIONS ARE AMONG KEY POPULATIONS AND THEIR PARTNERS

Punitive laws play an important role

Distribution of new HIV infections by gender and population, global, 2019



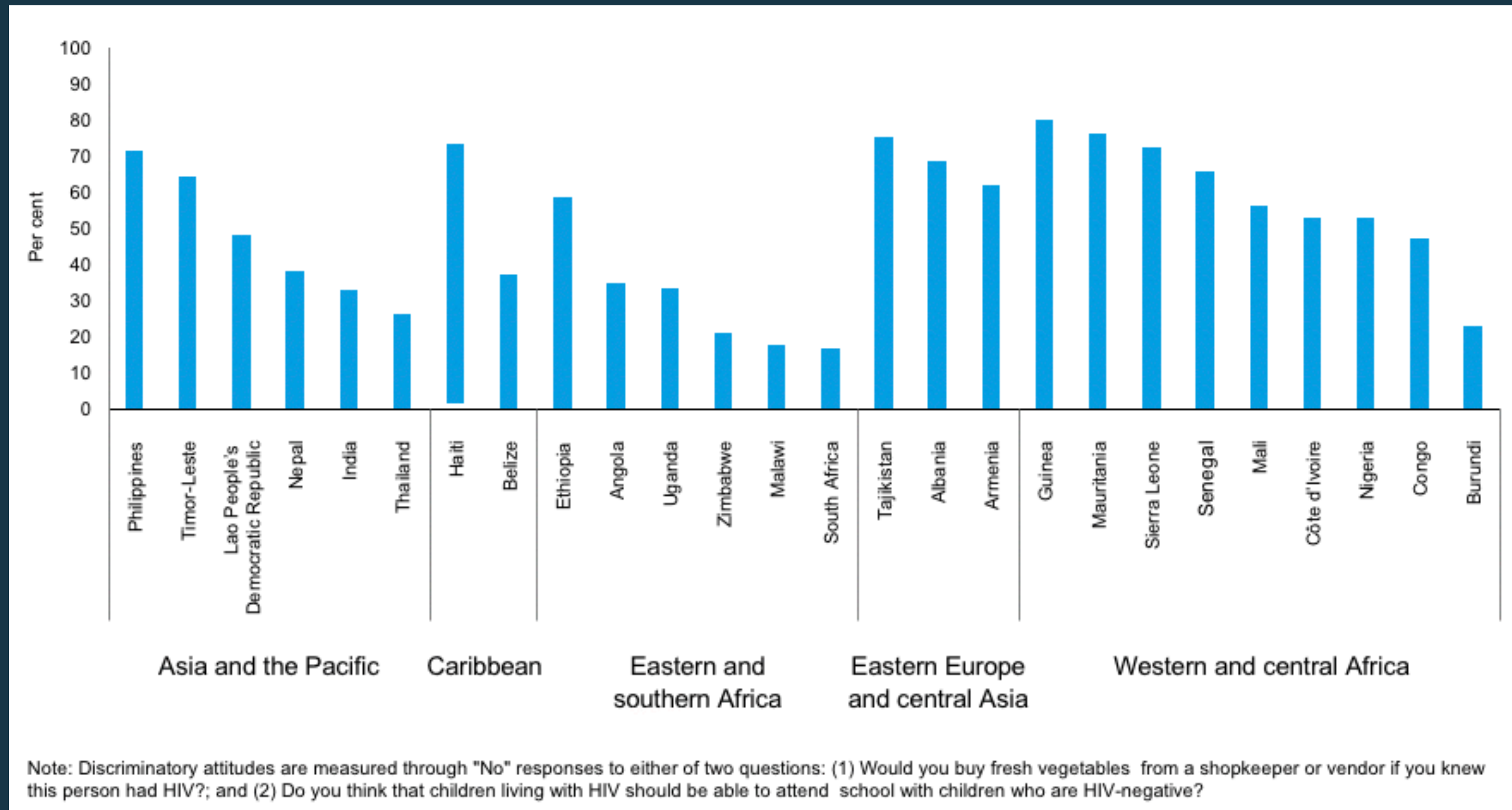
Countries with discriminatory and punitive laws, global, 2019



PERSISTENT STIGMA & DISCRIMINATION HAS AN IMPACT ON HEALTH

Percentage of people aged 15–49 years who report discriminatory attitudes

Population-based surveys, 2014–2018, countries with available data

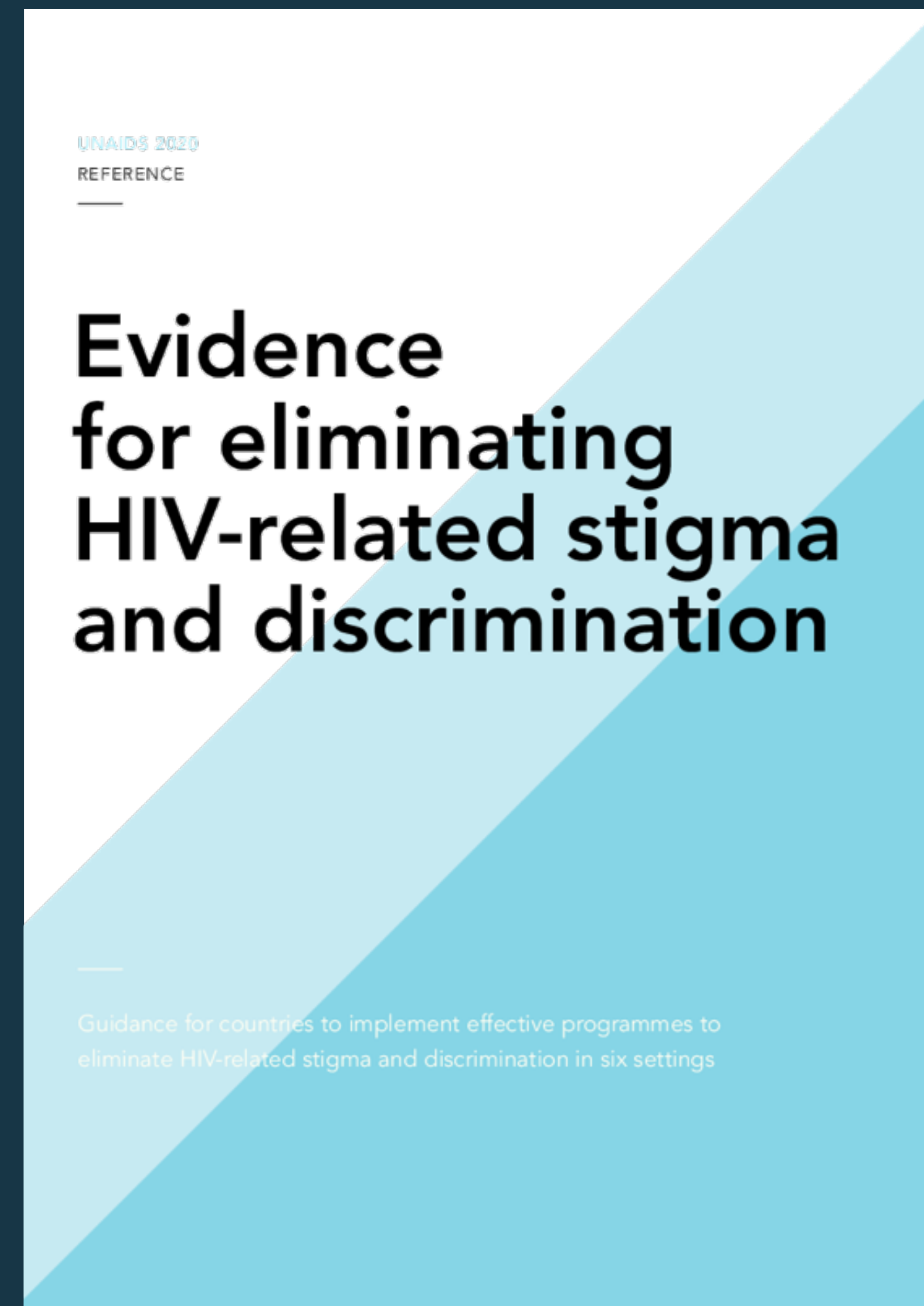


SCALING UP ACTIONS AND INVESTMENTS OF WHAT WORKS

Law reform

Addressing self stigma

Investing in stigma reduction in health facilities, and also in other contexts: education, law enforcement, communities



FROM COMMITMENT TO ACTION

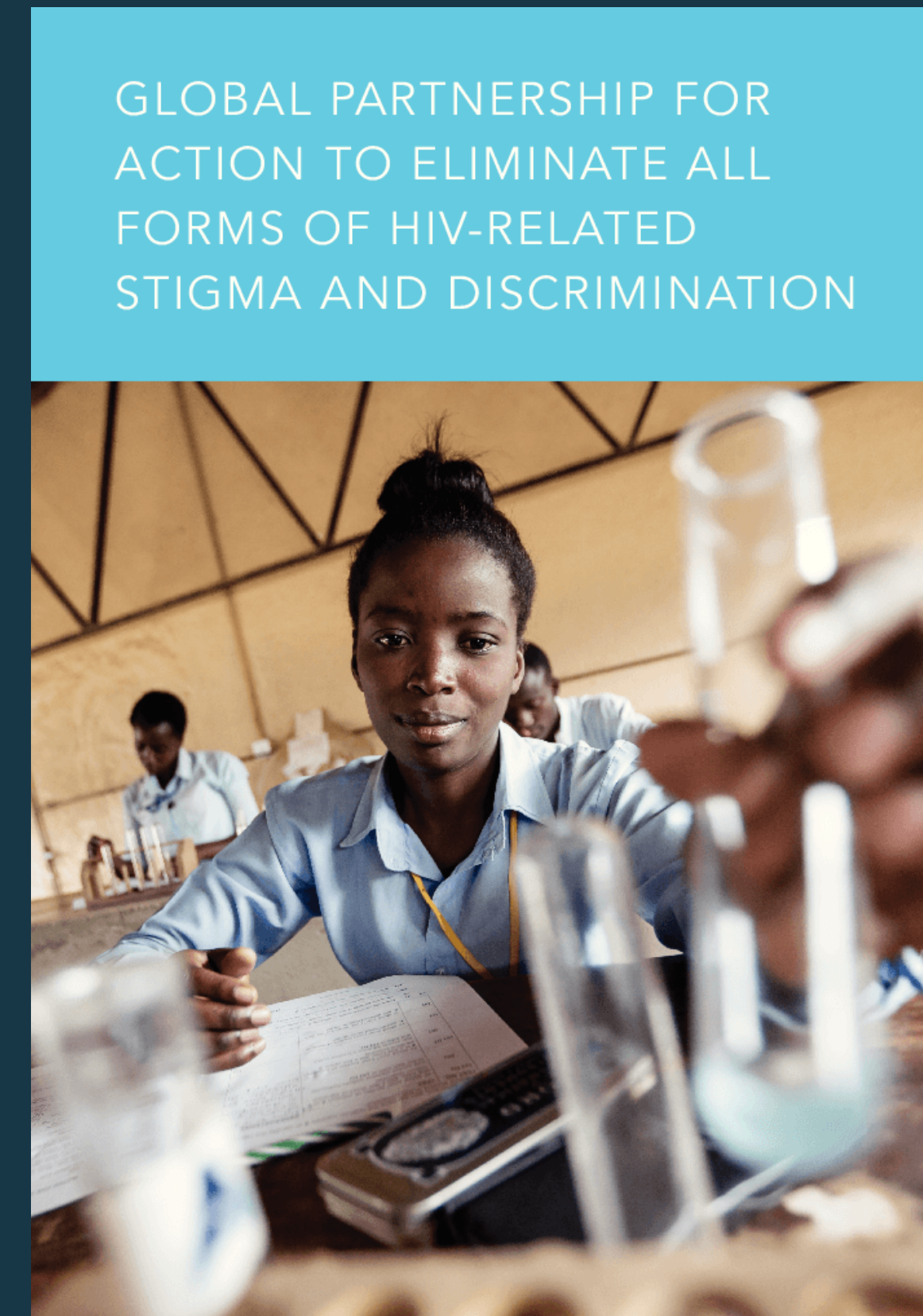
Disseminate evidence-based data to inform policy and programming, measure progress

Galvanize political will and accountability

Support governments to do what we know works

Partner with donors to support the scale up investments to remove barriers

Empower communities for advocacy and programme implementation



4500 girls and young women acquire
HIV every week

Discriminatory approaches and punishments
don't work

Challenge fear with information

Challenge punitive measures with empowerment

Challenge stigma and inequalities with empathy,
kindness and solidarity