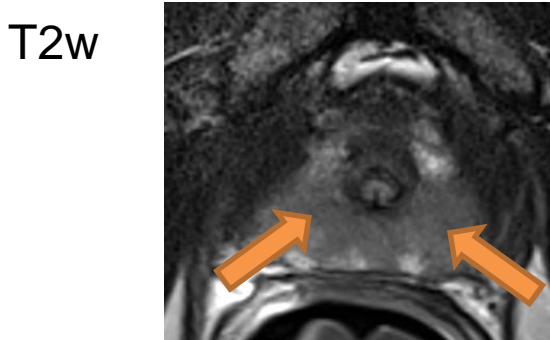
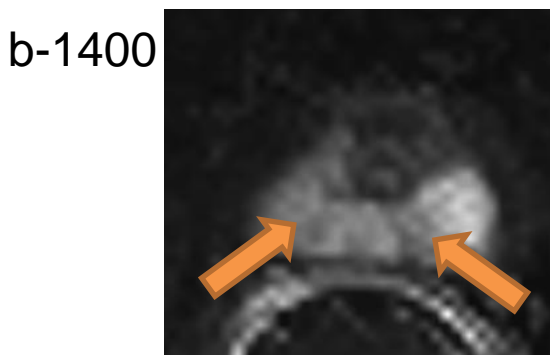


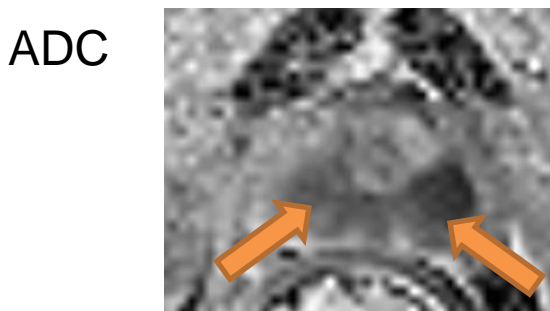
Case 1: Known prostate cancer, follow-up.



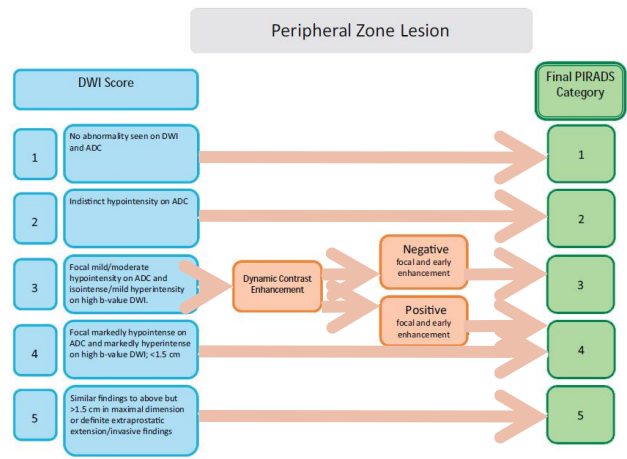
Homogeneous hypointense mass confined to prostate, bilaterally in the apex, lateral and medial, >1.5 cm.



Markedly hyperintense lesion, confined to the prostate, bilaterally in the apex, lateral and medial, >1.5 cm.



Markedly hypointense lesion, confined to the prostate, bilaterally in the apex, lateral and medial, >1.5 cm.



In the PZ, dominant sequence is DWI → **PIRADS v2.0 = 5**